

**IMMT Antibody (C-term)**  
**Purified Rabbit Polyclonal Antibody (Pab)**  
**Catalog # AP2931B****Specification**

---

**IMMT Antibody (C-term) - Product Information**

|                   |  |
|-------------------|--|
| Application       | IHC-P, FC, WB,E                                    |
| Primary Accession | <a href="#">Q16891</a>                             |
| Other Accession   | <a href="#">Q8CAQ8</a> , <a href="#">NP_006830</a> |
| Reactivity        | Human  |
| Predicted         | Mouse  |
| Host              | Rabbit   |
| Clonality         | Polyclonal   |
| Isotype           | Rabbit IgG   |
| Calculated MW     | 83678  |
| Antigen Region    | 700-729  |

**IMMT Antibody (C-term) - Additional Information****Gene ID** 10989**Other Names**

MICOS complex subunit MIC60, Cell proliferation-inducing gene 4/52 protein, Mitochondrial inner membrane protein, Mitofilin, p87/89, IMMT, HMP, MIC60, MINOS2

**Target/Specificity**

This IMMT antibody is generated from rabbits immunized with a KLH conjugated synthetic peptide between 700-729 amino acids from the C-terminal region of human IMMT.

**Dilution**

IHC-P~~1:50~100

FC~~1:10~50

WB~~1:1000

E~~Use at an assay dependent concentration.

**Format**

Purified polyclonal antibody supplied in PBS with 0.09% (W/V) sodium azide. This antibody is prepared by Saturated Ammonium Sulfate (SAS) precipitation followed by dialysis against PBS.

**Storage**

Maintain refrigerated at 2-8°C for up to 2 weeks. For long term storage store at -20°C in small aliquots to prevent freeze-thaw cycles.

**Precautions**

IMMT Antibody (C-term) is for research use only and not for use in diagnostic or therapeutic procedures.

**IMMT Antibody (C-term) - Protein Information**

**Name** IMMT

**Synonyms** HMP, MIC60, MINOS2

**Function** Component of the MICOS complex, a large protein complex of the mitochondrial inner membrane that plays crucial roles in the maintenance of crista junctions, inner membrane architecture, and formation of contact sites to the outer membrane (PubMed:[22114354](#), PubMed:[25781180](#), PubMed:[32567732](#), PubMed:[33130824](#)). Plays an important role in the maintenance of the MICOS complex stability and the mitochondrial cristae morphology (PubMed:[22114354](#), PubMed:[25781180](#), PubMed:[32567732](#), PubMed:[33130824](#)).

**Cellular Location**

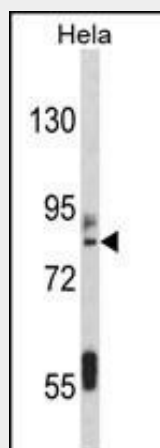
Mitochondrion inner membrane; Single-pass membrane protein. Mitochondrion

**IMMT Antibody (C-term) - Protocols**

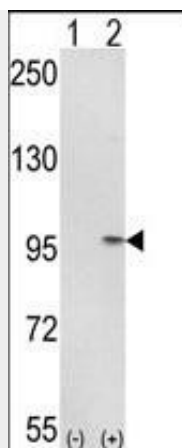
Provided below are standard protocols that you may find useful for product applications.

- [Western Blot](#)
- [Blocking Peptides](#)
- [Dot Blot](#)
- [Immunohistochemistry](#)
- [Immunofluorescence](#)
- [Immunoprecipitation](#)
- [Flow Cytometry](#)
- [Cell Culture](#)

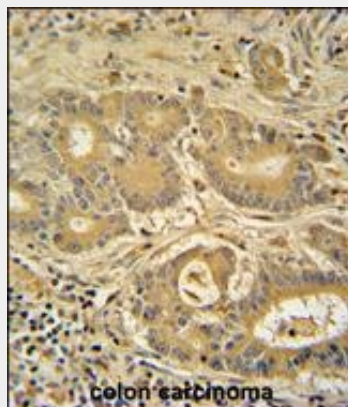
**IMMT Antibody (C-term) - Images**



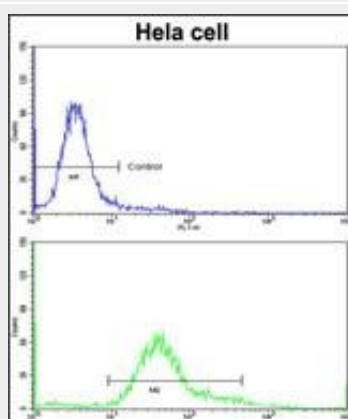
Western blot analysis of IMMT Antibody (C-term) (Cat. #AP2931b) in HeLa cell line lysates (35ug/lane). IMMT (arrow) was detected using the purified Pab.



Western blot analysis of IMMT (arrow) using rabbit polyclonal IMMT Antibody (C-term) (Cat. #AP2931b). 293 cell lysates (2 ug/lane) either nontransfected (Lane 1) or transiently transfected with the IMMT gene (Lane 2) .



IMMT Antibody (C-term) (Cat. #AP2931b) immunohistochemistry analysis in formalin fixed and paraffin embedded human colon carcinoma followed by peroxidase conjugation of the secondary antibody and DAB staining. This data demonstrates the use of the IMMT Antibody (C-term) for immunohistochemistry. Clinical relevance has not been evaluated.



Flow cytometric analysis of hela cells using IMMT Antibody (C-term)(bottom histogram) compared to a negative control cell (top histogram)FITC-conjugated goat-anti-rabbit secondary antibodies were used for the analysis.

#### IMMT Antibody (C-term) - Background

Mitochondria are the center of cellular energy production and essential metabolic reactions. As

double membrane-bound organelles, mitochondria from different species, tissues, and metabolic states are highly polymorphic in nature, yet exhibit common structural features. The ultrastructural variations in mitochondrial architecture occur mainly due to the differences in the amount and shape of cristae. Abundant cristae are found in mitochondria from tissues where energy demand is high. Analysis of the human heart mitochondrial proteome shows that mitofilin is one of the most abundant mitochondrial proteins. It appears to play an important role in the maintenance of cristae morphology.

#### **IMMT Antibody (C-term) - References**

Bernert,G., et.al., Proteomics 2 (12), 1752-1757 (2002)